



JUNE 2022



NEWSLETTER



Sickle Cell Foundation, Inc.

We do our best to round up the latest news. In our June issue, we honor World Sickle Cell Day and Pride Month within our Sickle Cell Community. Every day is Sickle Cell Awareness for many families and individuals. Meet some of our newest team members at our Foundation and more.



Volunteering



Community Partnership

- *World Sickle Cell Day Community Event 6/18*
- *Pride Month*
- *Volunteering*
- *Community Partnership & Advocacy*
- *Summer 22' Interns*



JUNE 2022



PARTNERSHIP & ADVOCACY



The sickle cell community needs your help. One of the major challenges the sickle cell community faces is the lack of voice and support on not only a local level but nationally and worldwide. We need individuals and organizations advocating for and serving the needs of the sickle cell disease population. While doing so generating awareness about SCD and sickle cell trait (SCT) and why it's so important for our community to get tested.

Our Sickle Cell Foundation, Inc. performs a crucial function in the care delivery ecosystem, but truthfully our efforts are hampered by a lack of financial resources and infrastructural challenges.

The way we change this is through community partnership and advocacy. To truly move from local-level impact to system-level change, our organization and client advocacy needs to be restructured, and our role embedded deeper within the care delivery system in our area.

It is truly time for all of us to start thinking differently about sickle cell awareness and its underlying cause—as individuals and as a society.

With our 2022 World Sickle Cell Day approaching, we know that every voice, no matter how big or small can shift a conversation and action to help drive change for sickle cell. Join us by partnering with us. Contact us at 850-222-2355 or email info@sicklecellfoundation.org.

JUNE 2022



*FREE Sickle Cell
Trait screening,
food and more!*

SICKLE CELL FOUNDATION, INC. PRESENTS

WORLD SICKLE CELL DAY 2022

Help us all over the world recognize Sickle Cell Disease as a public health problem and one of the world's foremost genetic diseases.

How can I help?

Donate Blood (GET A \$20 E-CARD)

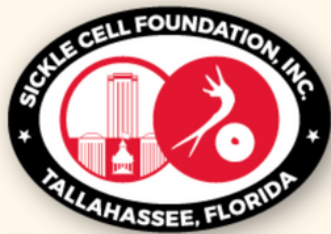
Where can you find us?

2625 South Adams Street Tallahassee, Florida
(At the corner of South Adams and Orange Ave.)

Saturday, June 18th, 2022
From 10 am to 3 pm



www.sicklececellfoundation.org



Summer 22' Student Interns

RICHARD BRITO

"I am a first-generation student born and raised in Hialeah, Florida. I am in the last semester of my Clinical Master of Social Work program at FSU. I choose SCF as my final field placement because it is a public health issue that is under-represented. My goal is to make education more accessible so that people can live more knowledgeable and healthier lives. When I am not focusing on school, I am focusing on my production company called The Brightside Productions LLC where we used evidence-based research to create a positive social change. When I am free, I spend my time with my family, friends, and my dogs Bosco and Happy."



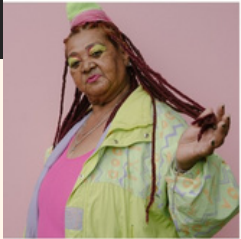
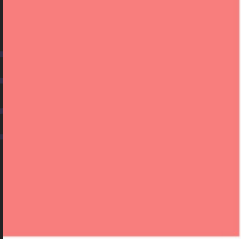
AMANDA REZENDE

"I am majoring in Biology at FSU! I am originally from Brazil, and my favorite hobby is painting. I chose SCF as my internship because Sickle Cell needs to be further publicized to the community, and it is such an amazing foundation with extraordinary goals and determination. My forever favorite quote is from the show Friends: "A promise between friends means never having to give a reason!"



2022

PRIDE Month



@sicklecellleon



SICKLE CELL & LGBTQIA

It is not only once a year we acknowledge SCD warriors of the LGBTQIA community. We will continue to appropriately and respectfully share their stories and bring inclusivity within our community based organization every day!



Meet Our **NEW** Client Program Director



Jenetta Nelson

"I am a native Floridian who loves her state. I am a Social Worker with twenty-eight years of domestic and international experience which includes working in direct services and administrative roles. Helping others is a passion that I've had since childhood which inspired me to obtain a Bachelor's and Master's degree in Social Work.

As a single parent, I had the pleasure of raising my daughter and watching her live a full life. Having an understanding of how life fluctuates and learning how to cope with unexpected circumstances, has helped me to create genuine rapport with others.

I am a Social Worker for life and will continue my service to the community. Thank you!"





WE NEED YOUR HELP

Dear Volunteer,

We appreciate your interest in volunteering with the Sickle Cell Foundation, Inc. Volunteers are an important part of our team and help us in many ways. We appreciate everyone who gives us the gift of their time. Wherever you volunteer, you will make a difference! Below is some basic information regarding our volunteer program duties.

The Volunteer Program focuses on the donation of time and talent and it provides for the development and administration of volunteers within all of the foundation's programs and services. Annually, volunteers contribute their time and talents to our endeavors. The importance of volunteers cannot be over-emphasized, for it is the collective effort of our volunteers, staff, and donors that enables us to offer essential services to the sickle cell community. If you are interested in volunteering, please contact the SCF office at (850) 222-2355 or email jenetta@sicklecellfoundation.org.

The SCF has a variety of volunteer activities, which you may be interested in, some of them include:

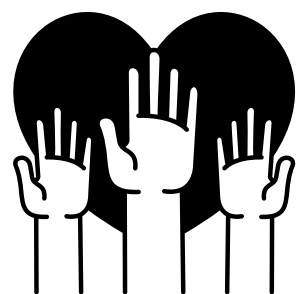
- Health and Information Fairs (*Saturdays and Sundays*)
- Administrative duties
- Assistance with in-house mailings

The Sickle Cell Foundation, Inc.

850-222-2355

info@sicklecellfoundation.org

sicklecellfoundation.org





The Sickle Cell Foundation, Inc. was organized on February 21, 1980, at the office of the Tallahassee Urban League. Upon installation of the newly organized foundation, an official charter was issued and later received nonprofit organization 501(c)(3) exempt status. There are sixteen (16) chapters in the State of Florida. The Sickle Cell Foundation, Inc. is the only local agency serving District II providing services to the following counties: Leon, Jefferson, Wakulla, Madison, Taylor, Gadsden, and Jackson counties.

WALKS INS AVAILABLE FOR SICKLE CELL TRAIT TESTING

1336 Vickers Road Tallahassee,
Florida 32303. USA
(850) 222-2355
info@sicklecellfoundation.org
Hours:
Monday-Friday
8:30A-5:00P



FOLLOW US ON
SOCIAL MEDIA

Scan QR Code



facebook



www.sicklececellfoundation.org