

FEBURARY 2022

The Monthly Newsletter of the Sickle Cell Foundation, Inc.



Lets Make A Change in Sickle Cell Community

EVERY VOICE, NO MATTER HOW
BIG OR SMALL CAN HELP MAKE A
CHANGE.

We're all in this, together.

Inside this special issue:

FSU STUDENT INTERN
HIGHLIGHTS-MEET OUR
SPRING 22' INTERNS

FREE AT-HOME COVID
TESTS

"HELP ME GROW" *FLORIDA*

AND MORE....

Meet Our Spring 22' Interns

WE ARE HAPPY TO WELCOME OUR LATEST BATCH OF INTERNS AT THE FOUNDATION FROM FLORIDA STATE UNIVERSITY

Meet Nichole, Janay, Andre'a, and Rapheal.



"I am from Miami, FL. My parents are from Colombia which has truly made me admire my Hispanic culture and implement those values in my everyday living. The SC foundation is a reliable agency that puts its client's needs first. The compassion they have for their clients and the effort that goes into raising awareness on a disease that is very undermined and misunderstood proves an agency that stands by its mission.

Honesty, compassion, connection, and strength are values I try to live by. It's important because I want to build strong connections with those around me in professional and personal relationships.

I enjoy spending quality time with my friends and family. It's always nice to spend time with those I love, especially when it involves food! Apart from that, I also enjoy quality time with myself, whether that be laying down with my cat reading a book, watching a show, or spending some time in nature to de-stress and do some grounding. **Favorite Quote:** "If you want the rainbow, you gotta put up with the rain." -Dolly Parton

"I am from Cocoa, Florida but I moved to Tallahassee to pursue my higher education. I am a senior in the Bachelor's program at Florida State University and I am majoring in social work. I like the sense of community within the Sickle Cell Foundation, Inc. It is a safe place for individuals to gain the support and resources that they need. Values that drive me are compassion, connection, and integrity.

When I am not at school or work, I enjoy spending time with family, shopping and traveling.

Favorite Quote: "People will forget what you said, people will forget what you did, but people will never forget how you made them feel."- Maya Angelou



Meet Our Spring 22' Interns

WE ARE HAPPY TO WELCOME OUR LATEST BATCH OF INTERNS AT THE FOUNDATION FROM FLORIDA STATE UNIVERSITY

Meet Nichole, Janay, Andre'a, and Rapheal.



"I am a first-generation college student at Florida State University, majoring in Social Work. I was raised in Fort Myers, Florida. I enjoy interning at the Sickle Cell Foundation, Inc. because I am able to learn more about Sickle Cell, which allows me to be able to inform others. I've been looking forward to the many connections and impacts that I will make this semester, and the Sickle Cell Foundation, Inc. makes that possible. Different values that drive me are love, honesty, respect, and self-awareness. When I am not at school or working I like to make sure that I am taking care of myself physically, mentally, and spiritually while also spending time with my dog. I work out, I like to cook healthy foods and I am just getting back into reading."

Favorite Quote: "Uncertainty is an aspect of life we must accept. It's okay to not know. This gives us an opportunity to dream and write our own stories."



"After having a very successful sales career, I decided to go back to school to fulfill my purpose in life and that is to work on policy and to be an advocate for children in underprivileged communities. What I enjoy most about working at SC Foundation, Inc. is the camaraderie and sense of community among my colleagues and the relationship they have built with their clients. The values that drive me are that every person should be treated equally and not treated based on what challenges they are born with or given to by society. When I am not at school or work I enjoy being a foodie and traveling to eat all types of food and great wine."

Favorite Quote: "I never treat people like they are a means to an end." - philosopher Immanuel Kant

The One-Stop Site to Supply for Financial Aid

Maximize the amount of financial aid you may receive by completing your Free Application for Federal Student Aid_ (FAFSA®) form as soon as possible! If you'll need financial aid for college or career school between July 1, 2022, and June 30, 2023, don't wait to apply/renew your FAFSA form.

FAFSA.GOV

INFORMATION TO HELP YOU COMPLETE
YOUR FAFSA FORM ??

Find Tips @studentaid.gov

-Get tips to help you fill out your 2022–23 FAFSA form

-Deadlines: Check your state's FAFSA deadline and remember to find your school's deadline on its website.

-FAFSA Questions and Answers Find answers to common questions about the FAFSA form.

COMPLETE THE FAFSA® FORM ON THE GO

Download the myStudentAid mobile app from Apple App Store or Google Play to complete the FAFSA form on your phone or tablet.

Download the myStudentAid Mobile App Today



Office of Federal Student Aid
U.S. Department of Education
400 Maryland Ave. SW,
Washington, DC, 20002, US

SICKLE CELL FOUNDATION, INC.

CRESCENT MOON SCHOLARSHIP

The Scholarship Assistance Fund of the Sickle Cell Foundation, Inc. formerly the Leon County Sickle Cell Foundation, Inc. was initiated in 2003 by the Dexter Martin & Carmen Cummings-Martin and the Foundation's Board of Directors, for assisting persons with sickle cell disease in achieving educational goals at a vocational school, college, or university.

The Crescent Moon Scholarship is a NEEDS BASED scholarship only being awarded after traditional financial aid has been applied for and awarded/denied. You MUST COMPLETE A FAFSA APPLICATION AT [FAFSA.ED.GOV](https://fafsa.ed.gov)



i

Do You Need Scholarship?

Requirements :

- Applicant must have sickle cell disease verified by a licensed medical doctor.
- Must accept or enroll, at least part-time accredited school.
- Must submit 2 letters of recommendation from any: church leadership, community leader, volunteer coordinator, educator, academic administrator.

Apply Now

Register To Our Email
www.sicklecellfoundation.org

Call For Question
850-222-2355



Every screening gets free toys!
PLUS.. be entered into a
drawing for a \$100 gift card at
Fun Station



Books, Balls, & Blocks!

When: February 14th-22nd

Free, virtual event

providing developmental and behavioral screenings for kids

1 month - 5 years old

Behavior, Cognitive, Communication, Problem Solving. Social, Gross, and Fine Motor Skills



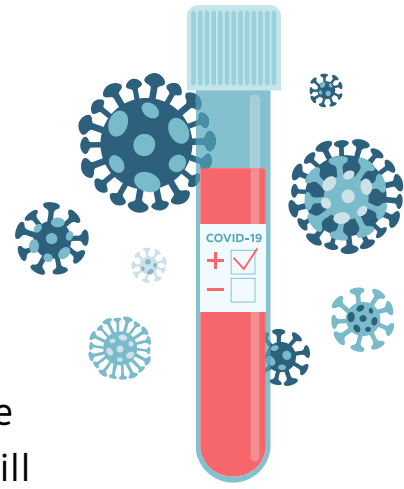
Where: Call/website/scan

(850) 345-3765

www.asqonline.com/family/7ea58d



Get free at-home COVID-19 tests



Every home in the U.S. is eligible to order 4 free at-home COVID-19 tests. The tests are completely free. Orders will usually ship in 7-12 days.

Order your tests now so you have them when you need them.

OTHER TESTING RESOURCES

If you need a COVID-19 test now, are looking for another type of COVID-19 test, or need more than 4 tests, the resources below are here: <https://www.covidtests.gov>

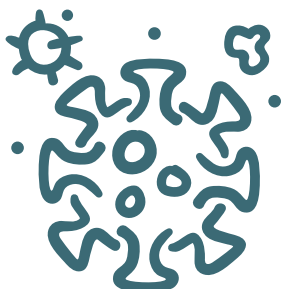
Take an at-home test:

- If you begin having COVID-19 symptoms like fever, sore throat, runny nose, or loss of taste or smell, or
- At least 5 days after you come into close contact with someone with COVID-19, or
- When you're going to gather with a group of people, especially those who are at risk of severe disease or may not be up to date on their COVID-19 vaccines.

ABOUT THE AT-HOME COVID-19 TESTS

The tests available for order:

- Are rapid antigen at-home tests, not PCR
- Can be taken anywhere
- Give results within 30 minutes (no lab drop-off required)
- Work whether or not you have COVID-19 symptoms
- Work whether or not you are up to date on your COVID-19 vaccines
- Are also referred to as self-tests or over-the-counter (OTC) tests



Order FREE At-Home Tests

<https://special.usps.com/testkits>



The Sickle Cell Foundation, Inc. was organized on February 21, 1980 at the office of the Tallahassee Urban League. Upon installation of the newly organized foundation, an official charter was issued and later received nonprofit organization 501(c)(3) exempt status. There are sixteen (16) chapters in the State of Florida. The Sickle Cell Foundation, Inc. is the only local agency serving District II providing services to the following counties: Leon, Jefferson, Wakulla, Madison, Taylor, Gadsden, and Jackson counties.

1336 Vickers Road Tallahassee, Florida 32303. USA
(850) 222-2355

Email: info@sicklecellfoundation.org



FREE SICKLE CELL TRAIT TESTING

Hours: Monday-Friday 8:30A-5:00P

Velma Stevens, LCSW
Executive Director

Chris Wells, LCSW
Client Program Director

Carissa Hunter, HHP
Community Outreach Director

Angela Brown
Office Manager

Deborah Cozart-Hawkins, BSN
Case Manager



FB: Sickle Cell Foundation, Inc.

IG: @sicklecellleon

Twitter: @sicklecellaware

YouTube: Sickle Cell Foundation, Inc.
Tallahassee, Florida